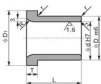


### JEFW Casting Bronze Guide Bushings 铜合金导套



#### Material Specifications 材料

材料: 高力黄铜  
CuZn25Al5Mn4Fe3

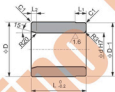
#### How To Order 订货方式

Code d L  
● JEFW 25 40

Unit(单位): mm

SinoBronze Standard No.	d	L	d	Hr	D	m6	D <sub>1</sub>	T	R	r	r <sub>1</sub>
● JEFW-25×40	25	40	25	+0.021 0	35	+0.028 +0.028	45	7	10	1	2
JEFW-30×50	30	50	30	+0.028 0	40	55	50	10			
JEFW-40×70	40	70	40		65						
JEFW-50×80	50	80	50	+0.030 0	65	75	75	10	20	2	2
JEFW-60×80	60		60		85						
JEFW-65×80	65	80	65	+0.030 0	80	90	90	10	20	2	2
JEFW-65×120		120									
JEFW-80×100	80	100	80	+0.036 0	100	110	130	10	20	2	2
JEFW-80×140		140									
JEFW-100×100	100	100	100	+0.036 0	120	130	130	10	20	2	2
JEFW-100×140		140									

### JPBW Casting Bronze Grooved Bushings 铜合金轴套



#### Material Specifications 材料

材料: 高力黄铜  
CuZn25Al5Mn4Fe3

#### How To Order 订货方式

Code d L  
● JPBW 25 40

Unit(单位): mm

SinoBronze Standard Part No.	d	d H7	D	Tolerance 公差	L	L <sub>1</sub>	L <sub>2</sub>
● JPBW-2540	25	25	40	+0.021 0	40	10	5
JPBW-3050	30	30	50	±0.008	50	10	
JPBW-3555	35	35	60	±0.0095	55	15	
JPBW-4060	40	40	60	±0.0095	60	10	10
JPBW-5075	50	50	70	±0.011	75	15	
JPBW-6090	60	60	80	±0.011	90	20	
JPBW-80120	80	80	100	±0.011	120	25	10
JPBW-100150	100	100	120	±0.0125	150		
JPBW-120180	120	120	140	±0.0125	180		