

SB-SOVP Oilless Wear Plate 自润滑板



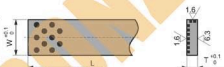
Material Specifications 材料

材料: 高力黄铜+固体润滑剂
CuZn25Al5Mn4Fe3 + Graphite(500#SP)

How To Order 订货方式

| Code | W | L | T |
|-----------|----|-----|----|
| ● SB-SOVP | 25 | 305 | 05 |

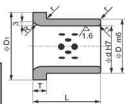
Sliding directions
运动方向



Unit(单位): mm

| SinoBronze Standard No. | L | W | T |
|-------------------------|-----|-----|------|
| ● SB-SOVP-2530505 | 305 | 25 | 5.3 |
| SB-SOVP-3030506 | | 30 | 6.3 |
| SB-SOVP-4060508 | 605 | 40 | 8.3 |
| SB-SOVP-3560510 | | 35 | 10.3 |
| SB-SOVP-5060510 | | 50 | 10.3 |
| SB-SOVP-4060512 | | 40 | 12.3 |
| SB-SOVP-8060512 | | 80 | 12.3 |
| SB-SOVP-6060516 | | 60 | 16.3 |
| SB-SOVP-8060520 | | 80 | 20.3 |
| SB-SOVP-10060520 | | 100 | 20.3 |

SB-SEFW Oilless Guide Bushing 自润滑导套



Material Specifications 材料

材料: 高力黄铜+固体润滑剂
CuZn25Al5Mn4Fe3 + Graphite(500#SP)

How To Order 订单方式

Code d L
● SB-SEFW 25 40

Unit(单位): mm

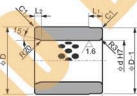
| SinoBronze Standard No. | d | L | d | H7 | D | m6 | D1 | T | R | r | r1 |
|-------------------------|-----|-----|-----|-------------|-----|------------------|-----|----|----|---|----|
| ● SB-SEFW-2540 | 25 | 40 | 25 | +0.021 0 | 35 | +0.025 +0.009 | 45 | 7 | 10 | 1 | |
| SB-SEFW-3050 | 30 | 50 | 30 | | 40 | | 50 | | | | |
| SB-SEFW-4070 | 40 | 70 | 40 | | 55 | | 65 | | | | |
| SB-SEFW-5080 | 50 | | 50 | +0.025 0 | 65 | | 75 | | | | |
| SB-SEFW-6080 | 60 | 80 | 60 | | 75 | +0.030 +0.011 | 85 | | | | |
| SB-SEFW-6580 | 65 | | 65 | | 80 | | 90 | 10 | 20 | 2 | |
| SB-SEFW-65120 | | 120 | | +0.030 0 | | | | | | | |
| SB-SEFW-80100 | 80 | 100 | 80 | | 100 | | 110 | | | | |
| SB-SEFW-80140 | | 140 | | | | | | | | | |
| SB-SEFW-100100 | 100 | 100 | 100 | | | +0.035 +0.013 | 130 | | | | |
| SB-SEFW-100140 | | 140 | | +0.035 0 | 120 | | | | | | |

SB-GPBW, SB-GPBF, Oilless Guide Bushing 自润滑轴套

SB-GPBF



SB-GPBW



Material Specifications 材料

SB-GPBW 材料: 高力黄铜+固体润滑剂

CuZn25Al5Mn4Fe3 + Graphite(500#SP)

SB-GPBF 材料: 铸铁+石墨

FC250# + Graphite

How To Order 订单方式

Code d L
● SB-GPBW 25 40
● SB-GPBF 30 50

Unit(单位): mm

| SinoBronze Standard Part No. | d | d H7 | D | 公差 | L | L1 | L2 |
|------------------------------|-----|------|-----|-------------|-----|----|----|
| ● SB-GPBW-2540 | 25 | 25 | 40 | +0.021 0 | 50 | 40 | 10 |
| SB-GPBW-3050 | 30 | 30 | 50 | | 50 | 50 | 5 |
| SB-GPBW-3555 | 35 | 35 | 60 | | 55 | 15 | |
| SB-GPBW-4050 | 40 | 40 | 60 | +0.025 0 | 60 | 10 | |
| SB-GPBW-5075 | 50 | 50 | 70 | | 75 | 15 | |
| SB-GPBW-6090 | 60 | 60 | 80 | +0.030 0 | 80 | 20 | |
| SB-GPBW-80120 | 80 | 80 | 100 | | 120 | 10 | |
| SB-GPBW-100150 | 100 | 100 | 120 | | 150 | 25 | 10 |
| SB-GPBW-120180 | 120 | 120 | 140 | +0.035 0 | 180 | | |